



*The State of Black Milwaukee in National Perspective:
Racial Inequality in the Nation's 50 Largest Metropolitan Areas*

Marc V. Levine
Professor Emeritus of History, Economic Development, and Urban Studies
University of Wisconsin-Milwaukee

The Milwaukee Urban League
September 24, 2020

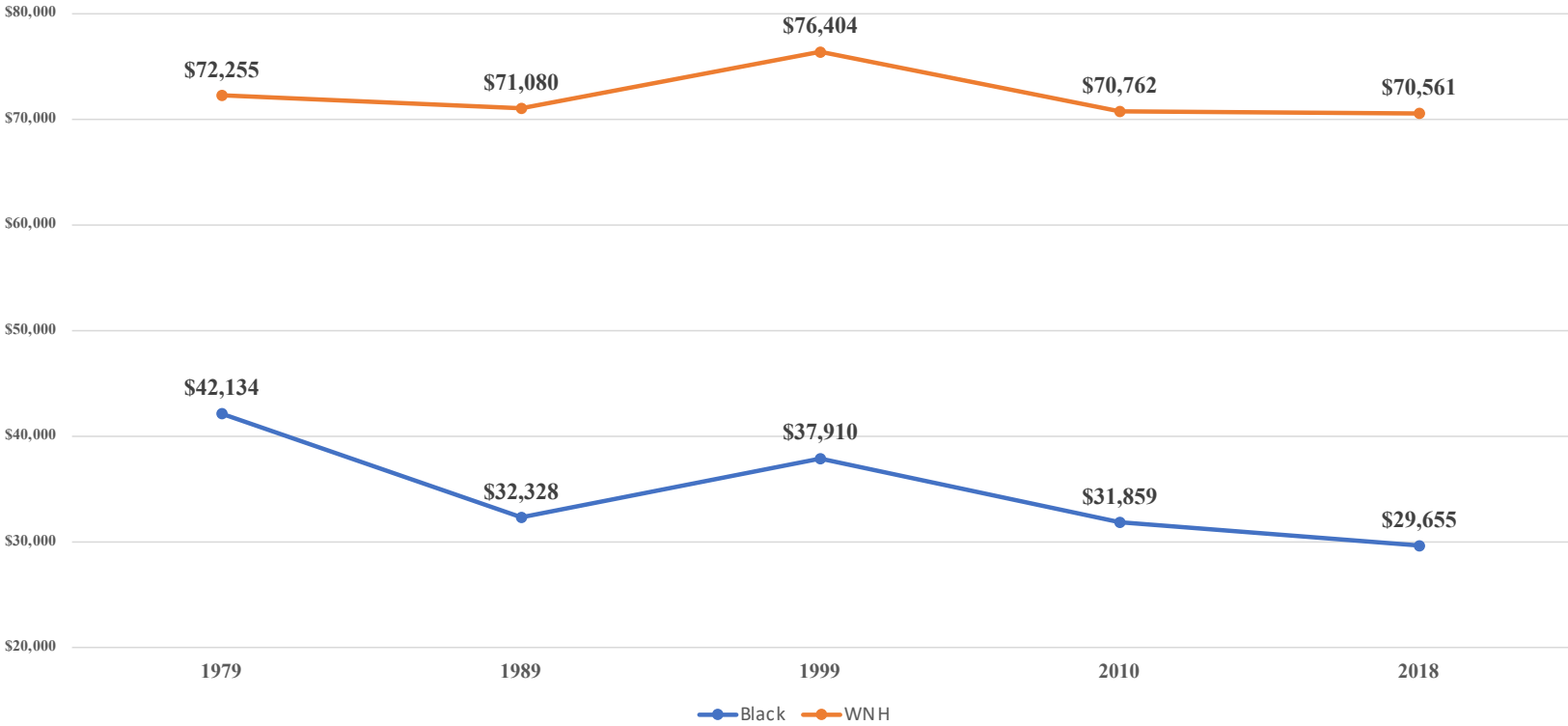
Where Black Milwaukee Stands on Key Indicators of Community Well-Being Among the Nation's 50 Largest Metropolitan Areas

- Most segregated
- Highest Black poverty rate
- Greatest gap in Black-white median household income
- Third-lowest median earnings for Black male workers
- Greatest gap in Black-white male earnings
- Third-lowest employment rate for prime working-age Black males
- Second-widest Black-white gap in male prime age employment rates
- Second-lowest Black homeownership rate
- Lowest Black share of private-sector management jobs
- Third-highest Black prison incarceration rate
- Fourth-worst Black infant mortality rate
- Second-worst rate of Black low birth-weight babies
- Fourth-lowest rate of upward economic mobility for poor Black youth

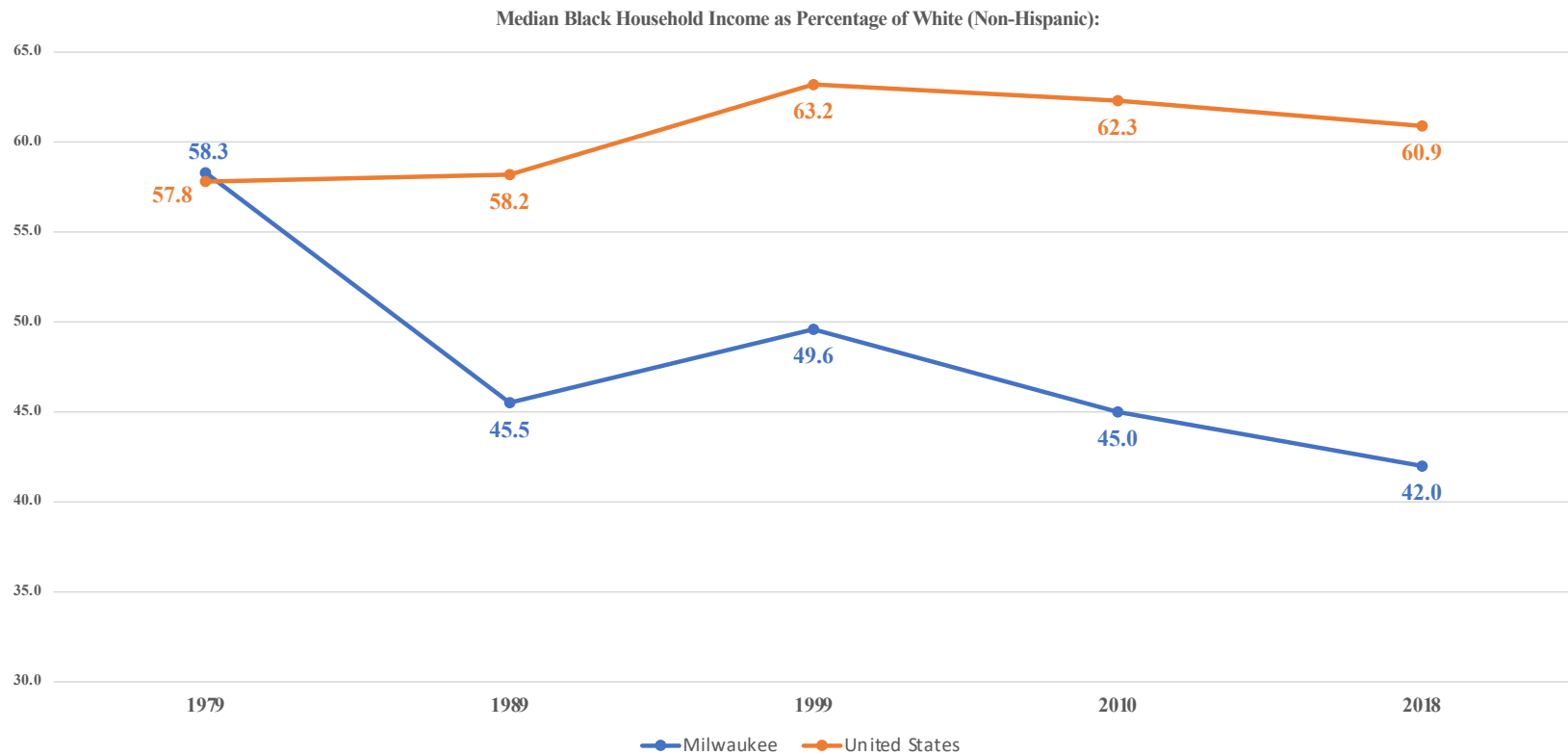
The Overall Picture: Milwaukee's Racial Challenge

- On the 50 indicators of community well-being examined in the study, compared to Black communities in the nation's 50 largest metropolitan areas:
- Black Milwaukee ranked last or next-to-last on 20 of the measures;
- Black Milwaukee ranked in the bottom five metro areas on 41 of the measures;
- Black Milwaukee ranked in the bottom ten metro areas on 47 of the indicators.

Race and Household Income in Milwaukee: 1979-2018



The Growing Black-White Income Gap: Milwaukee vs. the United States: 1979-2018

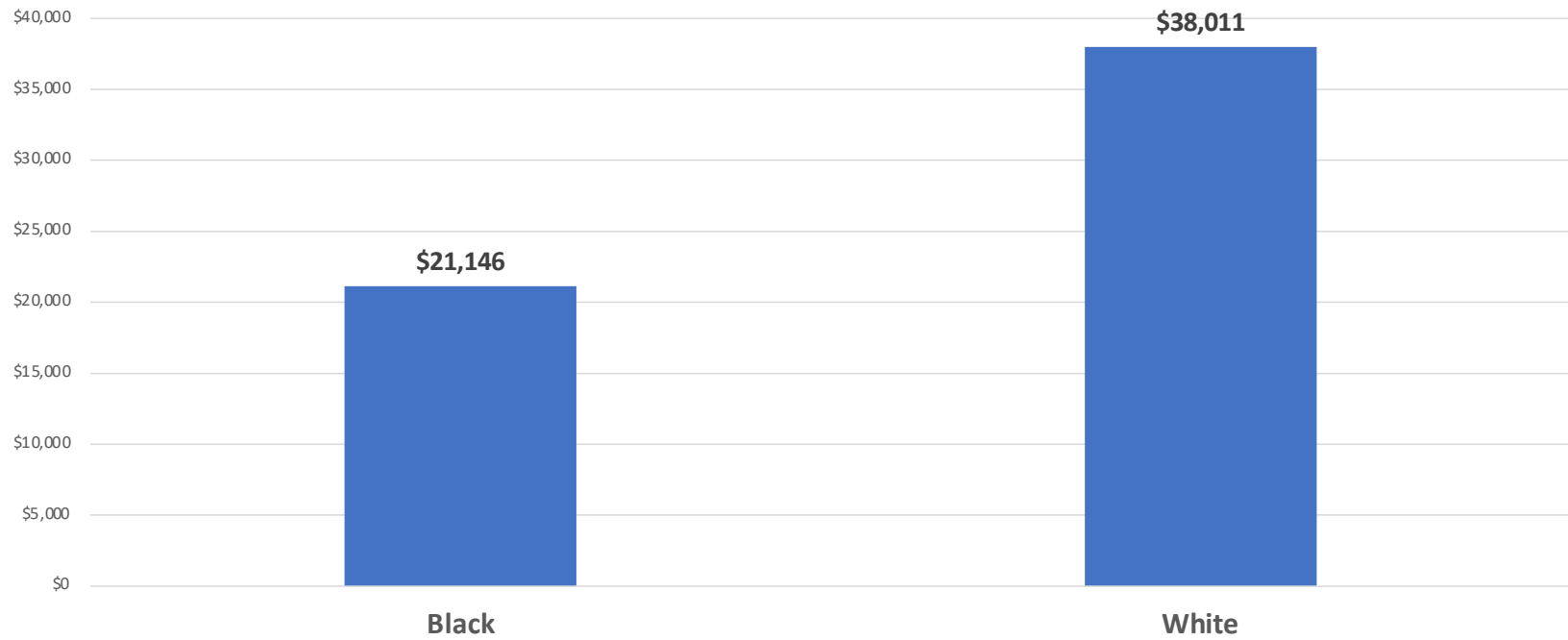


Race, Household Income, and Concentrated Poverty in Milwaukee
 % by race and income living in concentrated poverty census tracts

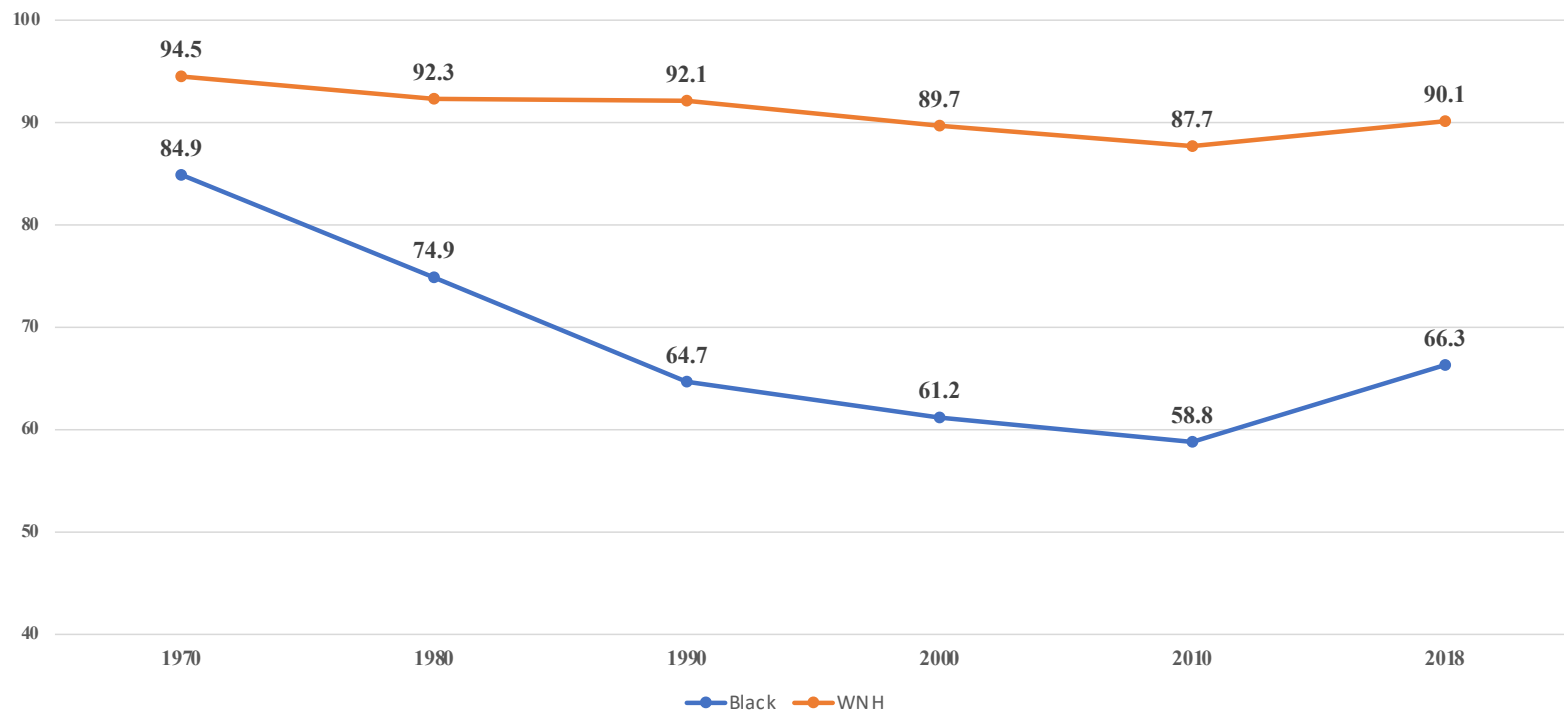
| Annual Income Class | Black | White NH | Hispanic |
|---------------------|-------|----------|----------|
| Under \$10,000 | 39.1 | 7.3 | 32.8 |
| \$10,000-\$24,999 | 33.5 | 4.3 | 33.1 |
| \$25,000-\$49,999 | 23.0 | 2.5 | 22.5 |
| \$50,000-\$99,999 | 14.5 | 1.3 | 14.7 |
| Over \$100,000 | 13.1 | 0.6 | 8.5 |
| All HHs | 26.1 | 2.3 | 21.9 |

Milwaukee's Racial Divide in Economic Mobility:

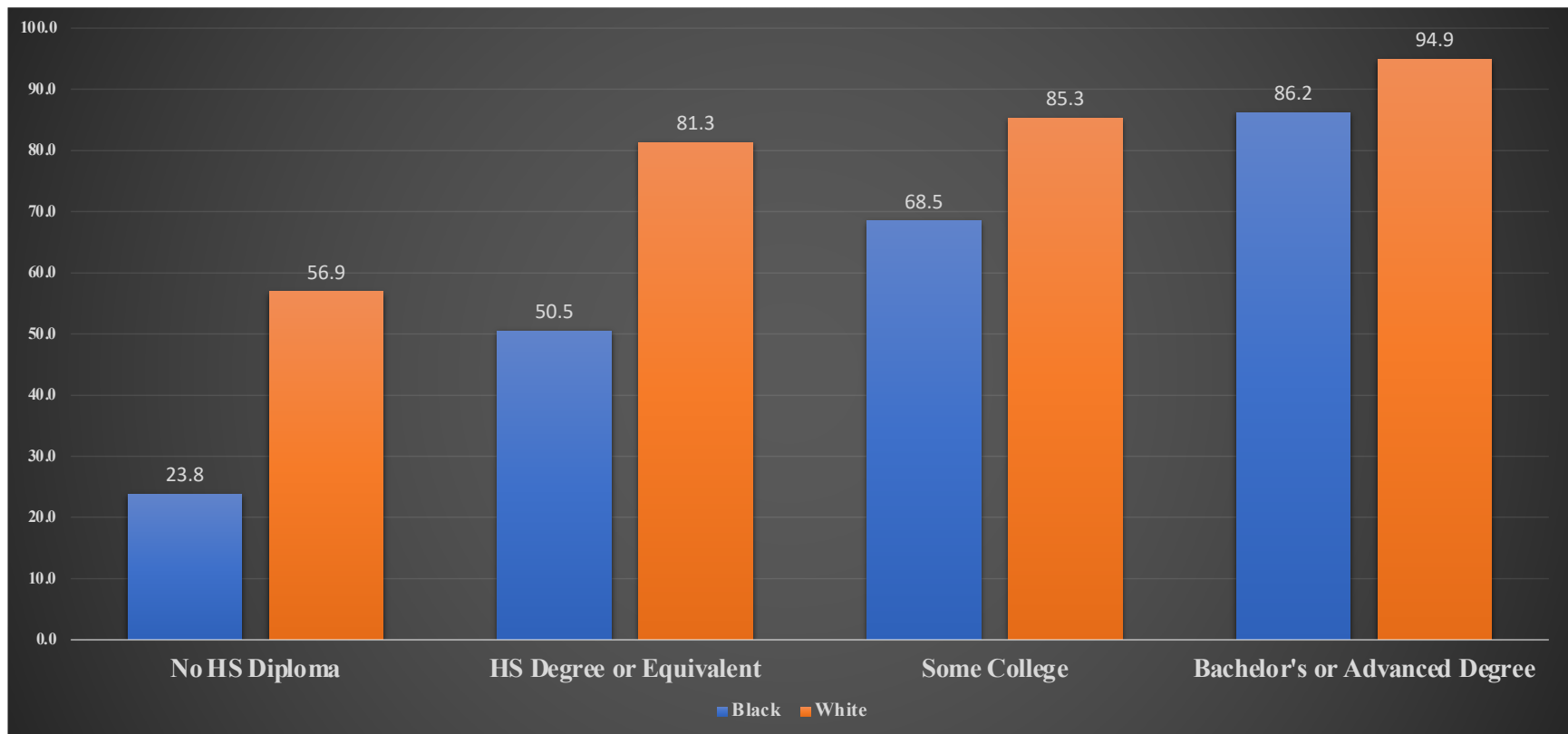
Estimated Young Adult Average Household Income in 2014 for Blacks and Whites Born in the late 1970s and early 1980s into low-income households



Employment Rate of Prime Working-Age (25-54) Males: Milwaukee Metro Area, 1970-2018

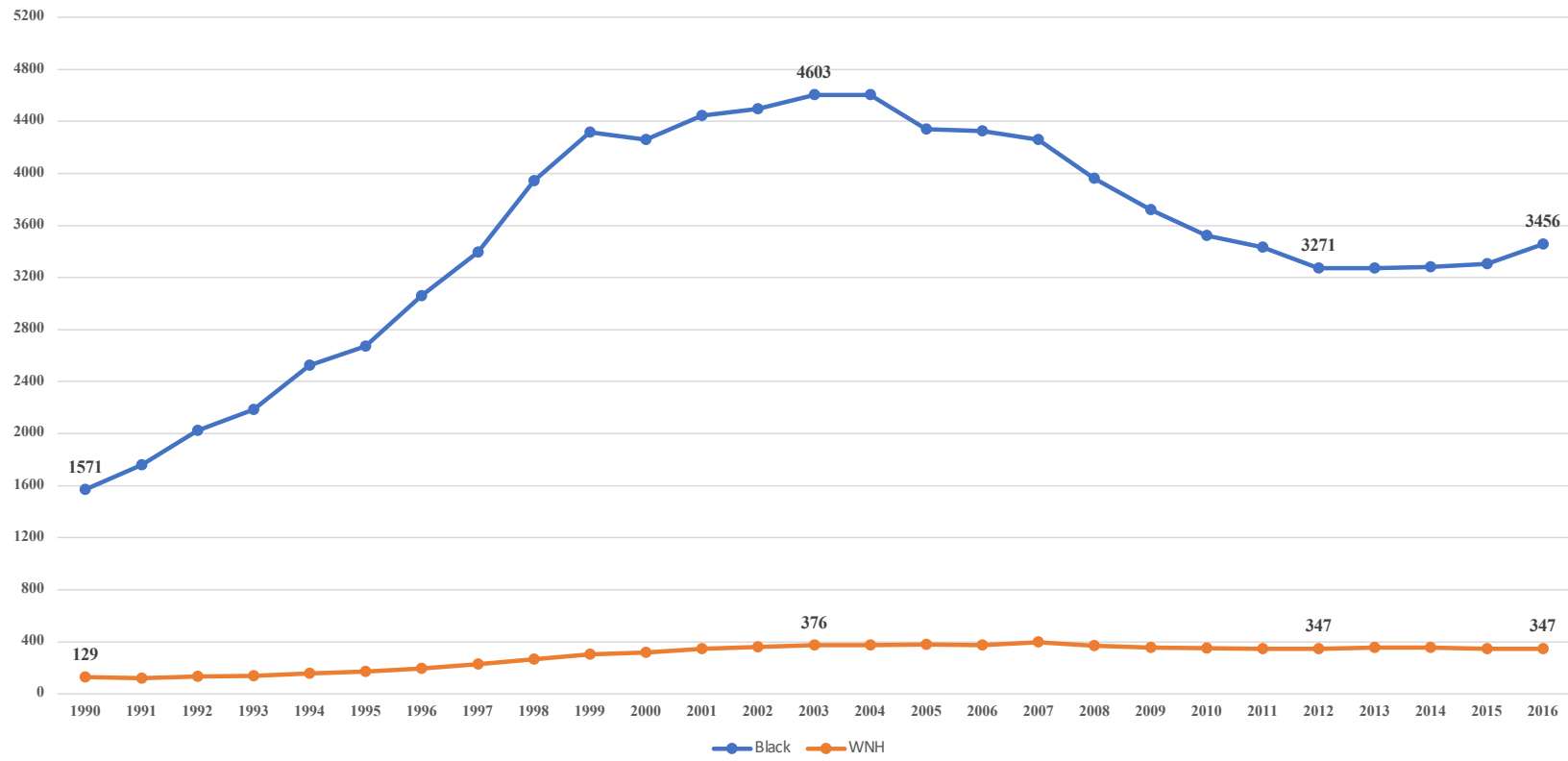


Employment Rates for Prime-Age Males (ages 25-54)
By Race and Educational Attainment
Milwaukee: 2012-2016



Black and White Incarceration Rates in Milwaukee County: 1990-2016

Prison population by "county of commitment" per 100,000 residents, ages 15-64, by race



Birmingham: 1963

- Dr. Martin Luther King:

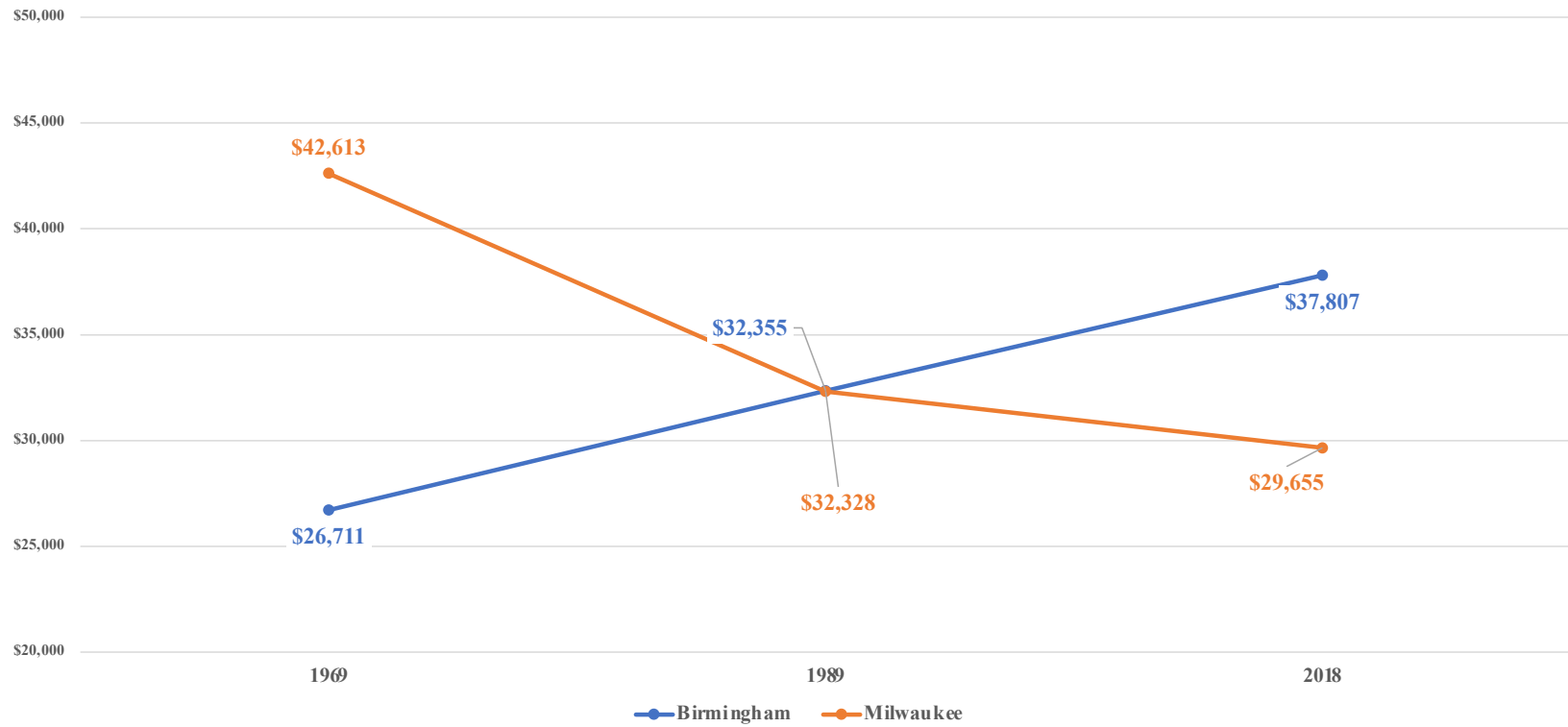
“There can be no gainsaying the fact that racial injustice engulfs this community. Birmingham is probably the most thoroughly segregated city in the United States. I am in Birmingham because injustice is here.”

2020: Dr. King would be in Milwaukee.

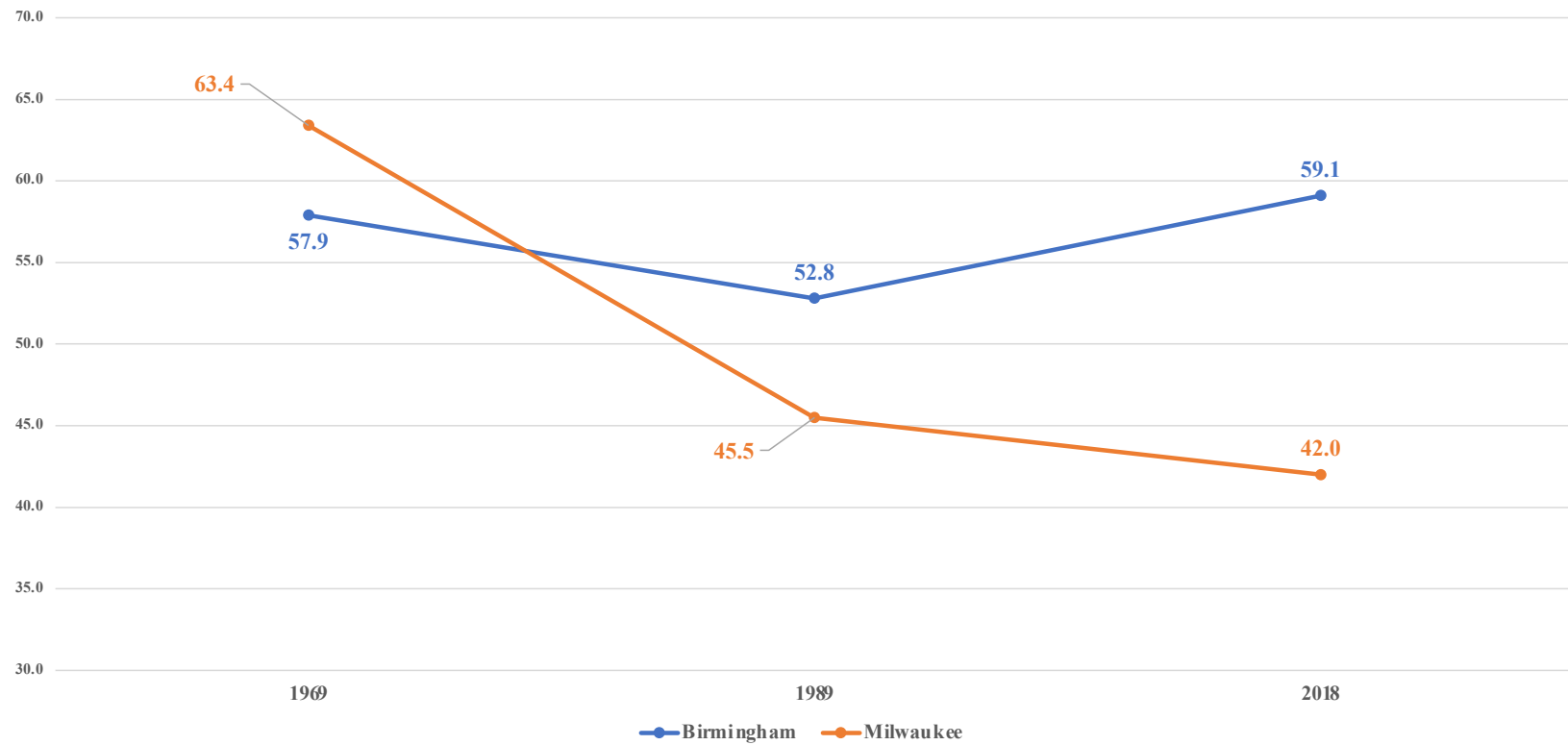
Real Median Black Household Income: 1969-2018

Birmingham and Milwaukee

(in 2018 constant dollars)



Black Household Income as a Percentage of White: 1969-2018 Birmingham and Milwaukee



Black Poverty Rates: 1969-2018

Birmingham and Milwaukee

